

LEGEND

- 150 INDEX CONTOUR
- 152 INTERMEDIATE CONTOUR
- 154 HALF FOOT CONTOUR
- 157 SPOT GRADE
- 158.75 DRAIN LINE
- 160 CATCH BASIN (CB)
- 165 DRAIN MANHOLE (DM)
- 170 DRAIN INLET (DI)
- 175 WATER QUALITY DEVICE (WQD)
- 180 SEWER LINE
- 185 WATER MANHOLE (SM)
- 190 WATER LINE
- 195 FIRE HYDRANT
- 200 GATE VALVE & TEE
- 205 ELECTRIC LINE
- 210 ELECTRIC TRANSFORMER
- 215 GAS METER
- 220 CONCRETE WALK
- 225 RETAINING WALL
- 230 EROSION CONTROL BARBER
- 235 POLE MOUNTED LIGHT (16'-50' POLE)
- 240 POLE MOUNTED LIGHT (12'-16' POLE)
- 245 PEDESTRIAN LEVEL LIGHT
- 250 H.P. RAMP

REVISIONS

ISSUE DATE	DESCRIPTION
JANUARY 2014	PRELIMINARY PLAN
MAY 2014	REVISIONS FOR PERMIT
JUNE 25, 2014	FINAL PLAN

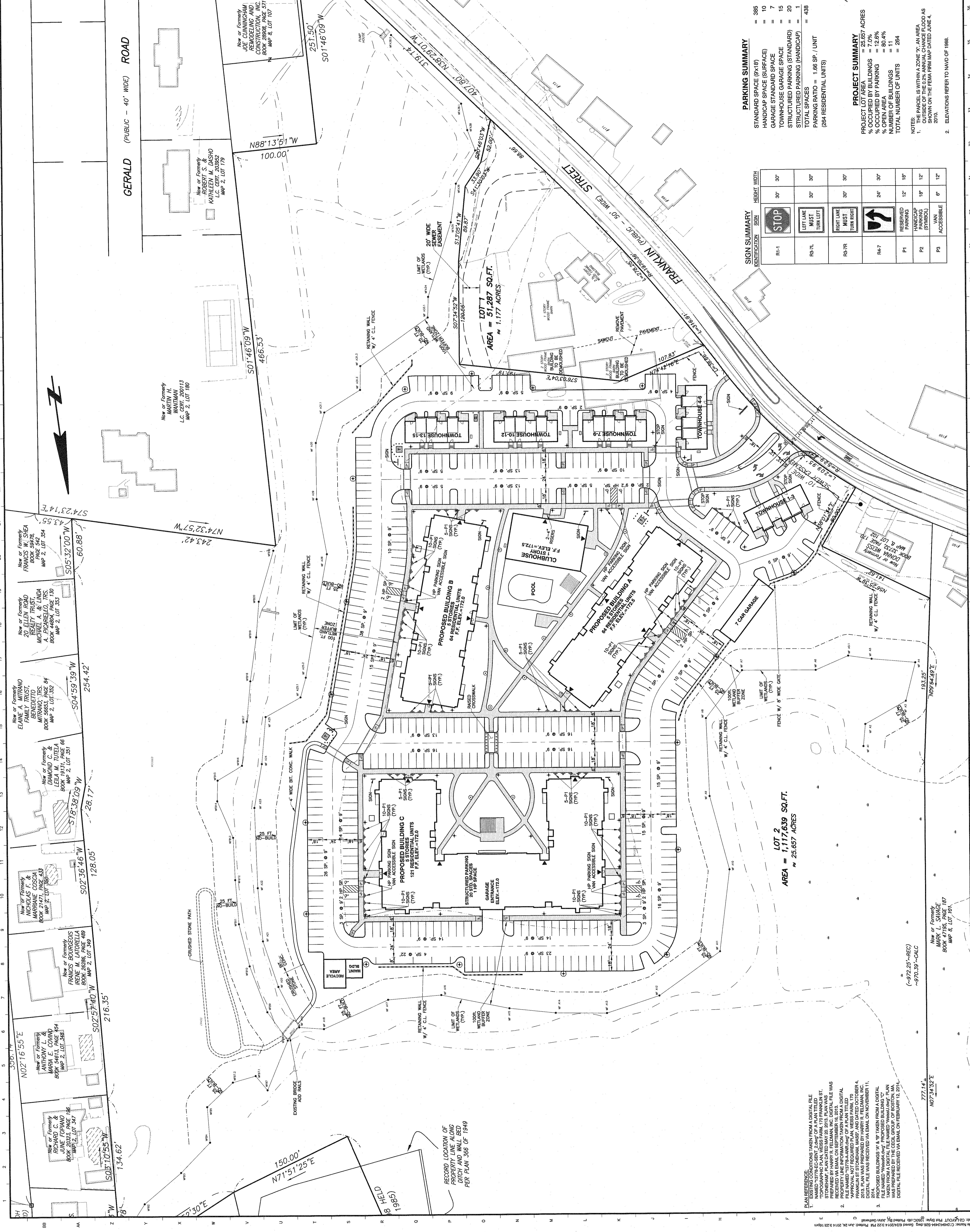
DATE: JUNE 25, 2014
SCALE: 1" = 40'
SHEET C-2

THE COMMONS AT WEISS FARM

STONEHAM, MASSACHUSETTS

SITE LAYOUT AND MATERIALS PLAN

hwm Moore ASSOCIATES, INC.
CIVIL ENGINEERING AND ARCHITECTURE
113 WEST ST. STE. 100
STONEHAM, MA 01558
TEL: 978-927-9145 FAX: 978-927-9145 WEB: HWMOORE.COM



PARKING SUMMARY

STANDARD SPACE (8'x18')	= 385
HANDICAP SPACE (SURFACE)	= 10
TOWNHOUSE GARAGE SPACE	= 7
TOWNHOUSE GARAGE SPACE	= 15
STRUCTURED PARKING (STANDARD)	= 20
STRUCTURED PARKING (HANDICAP)	= 1
TOTAL SPACES	= 438
PARKING RATIO = 1.88 SP. / UNIT (264 RESIDENTIAL UNITS)	

SIGN SUMMARY

IDENTIFICATION	SIGN	HEIGHT	WIDTH
RI-1	STOP	30"	30"
RS-7L	LEFT TURN MUST TURN LEFT	30"	30"
RS-7R	RIGHT TURN MUST TURN RIGHT	30"	30"
RA-7	RIGHT TURN ONLY	30"	30"
P1	PREFERRED PARKING	18"	12"
P2	HANDICAP PARKING (SYMBOL)	18"	12"
P3	VAN ACCESSIBLE	6"	12"

PROJECT SUMMARY

PROJECT LOT AREA (SURFACE)	= 25,637 ACRES
% OCCUPIED BY BUILDINGS	= 12.6%
% OCCUPIED BY PARKING	= 80.4%
% OPEN AREA	= 11%
NUMBER OF BUILDINGS	= 11
TOTAL NUMBER OF UNITS	= 264

NOTES:
1. THE PARCEL IS WITHIN A ZONE "X", AN AREA OF AGRICULTURE, FORESTS AND OPEN SPACE SHOWN ON THE FEMA FIRM MAP DATED JUNE 4, 2010.
2. ELEVATIONS REFER TO NAVD OF 1988.